



**Wingrave
Community
Association**

*A vision for the
Community Centre*

WCA Vision:2020

“To create a better space with improved long term income stream to ensure the Centre can continue to be a valuable and much loved community resource”

- *Improve the facilities for a wider range of events*
 - *Provide facilities for Events where food can be prepared and served efficiently*
 - *Improve the attractiveness of the main hall – improve ambience and function*
 - *Refurbish and expand the bar*
- *Improve the Stage space and overall interior lighting*
 - *Improve the proscenium and overall impact of the stage*
 - *Replace end of life electrical installations*

Areas impacted

✓ New Gas Boiler and move exit

✓ Remove Old Boiler Room

Temporary Bar Removed

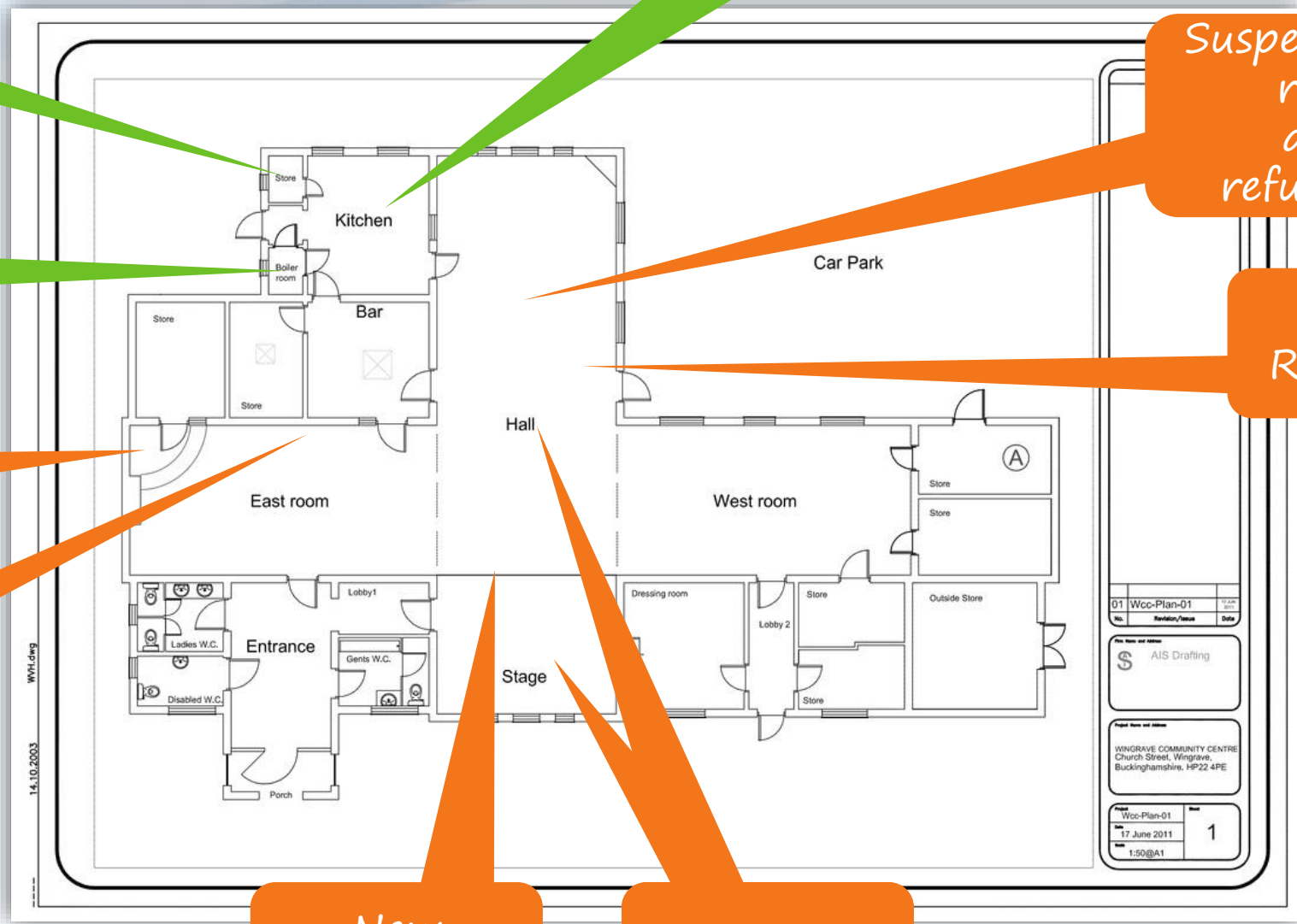
Bar Extension – remove wall

✓ = Completed

✓ Kitchen refurbishment

Suspended ceiling removed and hall refurbishment

Floor Replacement



New Proscenium

Light rigs

Vision:2020 Status January 2018

No	Activity	Why
1 ✓	Replace old oil burner in kitchen and radiators in main hall	Old boiler inefficient and end of life. Support old warm air duct heating and large amount of piping in mail hall ceiling. Improve overall heating control with room by room control.
2 ✓	Remove old boiler walls and expand kitchen area	New Boiler much smaller and to be housed in small cleaning cupboard – freeing up a significant space in the kitchen
3 ✓	Refurbish kitchen	Overall kitchen to comply with food safety guidance which include surface and wall material specifications and to support “professional” scale preparation with relevant ovens and equipment
4	Remove suspended ceiling in main hall and reveal original Victorian timbers	Removal of old heating ducting allows for removal of suspended ceiling installed over many years to reveal attractive traditional ceiling and vaulted space. Additional insulation and new architectural lighting
5	Replace proscenium and add fixed lighting rig	New ceiling height allows for a more attractive proscenium and fixed lighting rig to be mounted above stage and space in main hall ceiling for fixed stage lighting to be mounted
6	Expand Bar and remove temporary bar in East room	Rearrangement of bar and surrounding area allows efficient work flow and operational effectiveness creating the ability to handle full hall numbers effectively. Restores significant floor space on East room for hiring.
7.	Replace existing flooring in Main Hall with new equivalent style.	Current flooring is end of life – independent flooring specialist advised full replacement. Flooring currently rising in main hall due and temporary fixes are being applied.

✓ = Completed

The Timeline

Completed

Completed

Planned

Planned

Planned

FY2016-
2017

FY2017-
2018

FY2018-
2019

FY2019-
2020

FY 2020-
2021

1. Boiler replacement and new main room radiators
2. Make good old boiler space in kitchen

3. Refurbish kitchen and install new equipment

6. Redevelop Bar Area and remove temporary bar

4. Remove suspended ceiling in main hall and refurbish main hall
5. Replace proscenium and install light rigs

7. Main Hall Flooring replacement

Funding for the completed phases was raised from a mix of Grants, S106 funding, support from the PC and largely the WCA's own funding

Funding Sources

1. Significant contribution from the Kirby Fund.
2. Wingrave Players.
3. WCA Major repairs Fund and ongoing fundraising

If you want to support Vision:2020 then get in touch!

Funding for Vision:2020

A large part of the funding has been secured.

1. A significant contribution from the Kirby Fund.
2. Wingrave Players.
3. WCA Major repairs Fund.

....but we still have work to do....

The WCA will be running various events over the coming year to raise funds:-

- 80's night - dust off your glad rags and enjoy a great evening whilst also supporting Vision:2020!
- Royal Wedding - lots of events planned for all ages to help Wingrave Celebrate - more news coming soon!

Sponsorship

Corporate Partner Program - if you are interested in finding out more then please speak with a Committee member today!



Wingrave
Community
Association

*Work Completed
to date...*



Vision:2020 Completed Projects

Kitchen refurbished and new Boiler



Before....



....After!



Vision:2020 Completed Projects

The New Kitchen...



Looking out towards the hatch and door to the Main Hall



Looking towards door into Bar

...great feedback from professional caterers at a recent event!



Wingrave
Community
Association

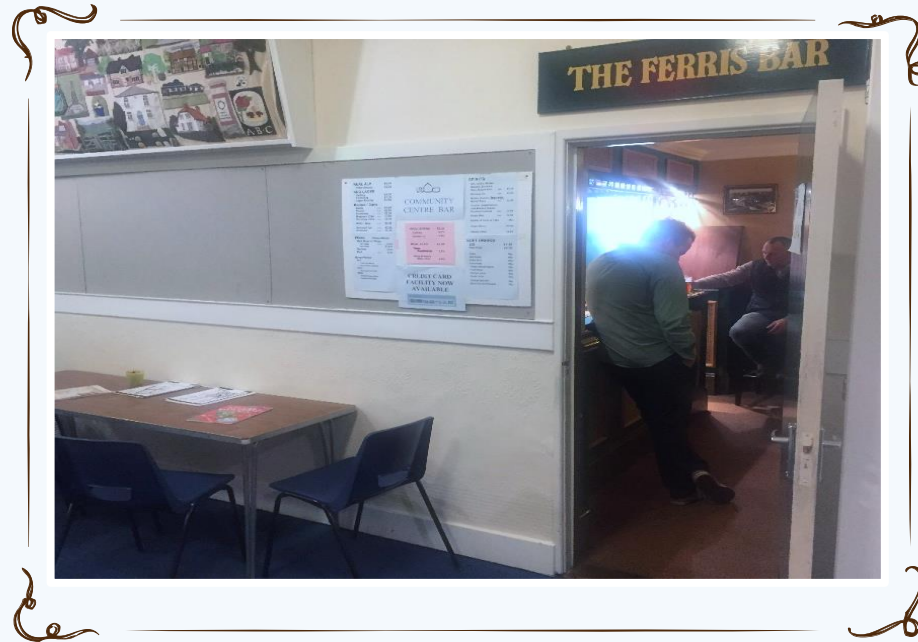


Vision:2020

Bar Project

Vision:2020

Original Visualisation – Bar Area



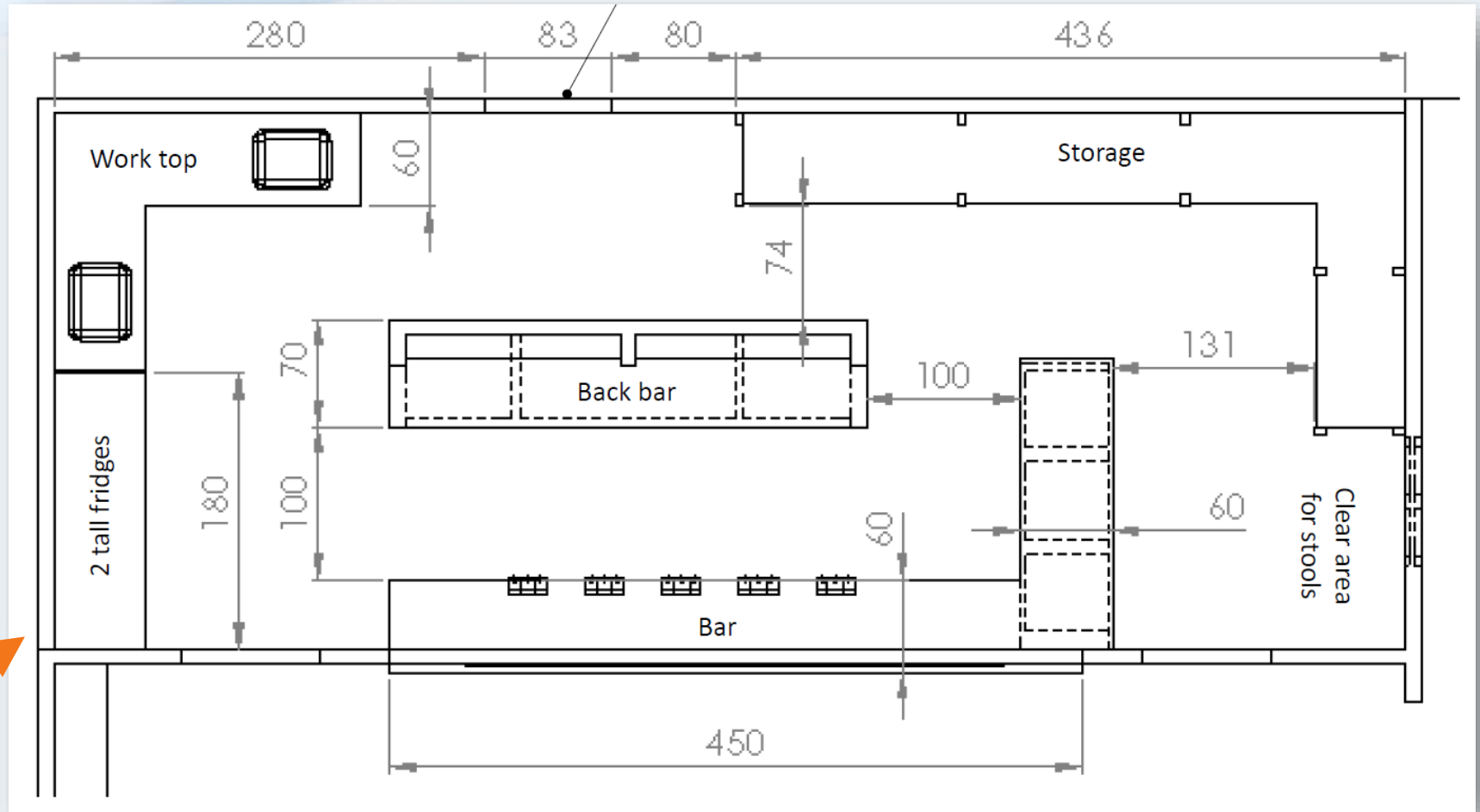
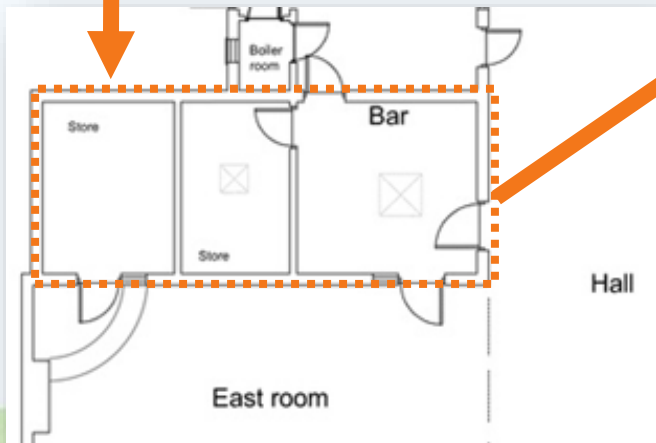
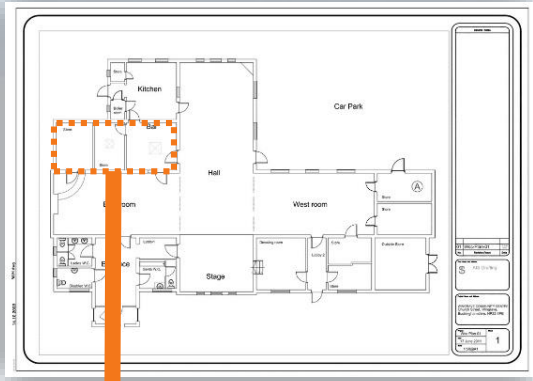
Current Wingrave Bar



Example – Long Clawson Village Hall



Bar Redevelopment - Proposed Plan



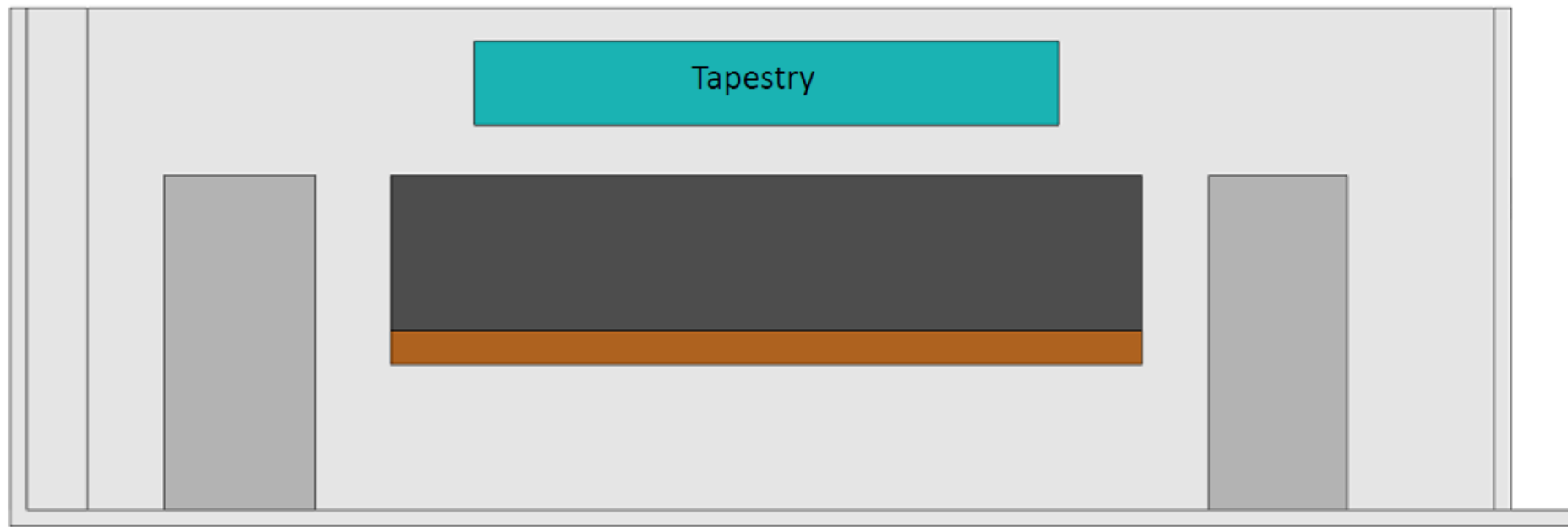
Proposed Design and Layout

- Bar 4.5m long
- Tapestry centred above – a key feature of new bar surround
- Aisle 1m wide (approx. 39”) as recommended in industry guidelines
- Coolers under back bar so products can be viewed by customers
- Lager kegs need to be at end of bar for ease of pipes
- New outside door required to allow access for deliveries
- Replaces current temporary bar

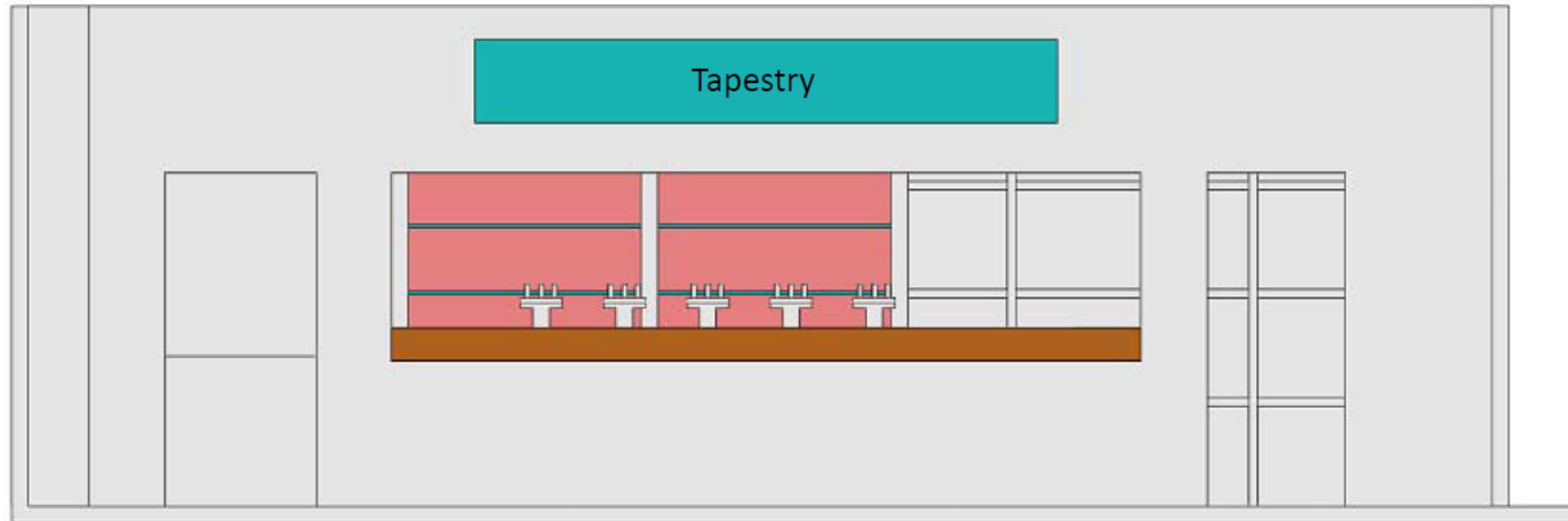


Front Elevation

View from East Room Entrance

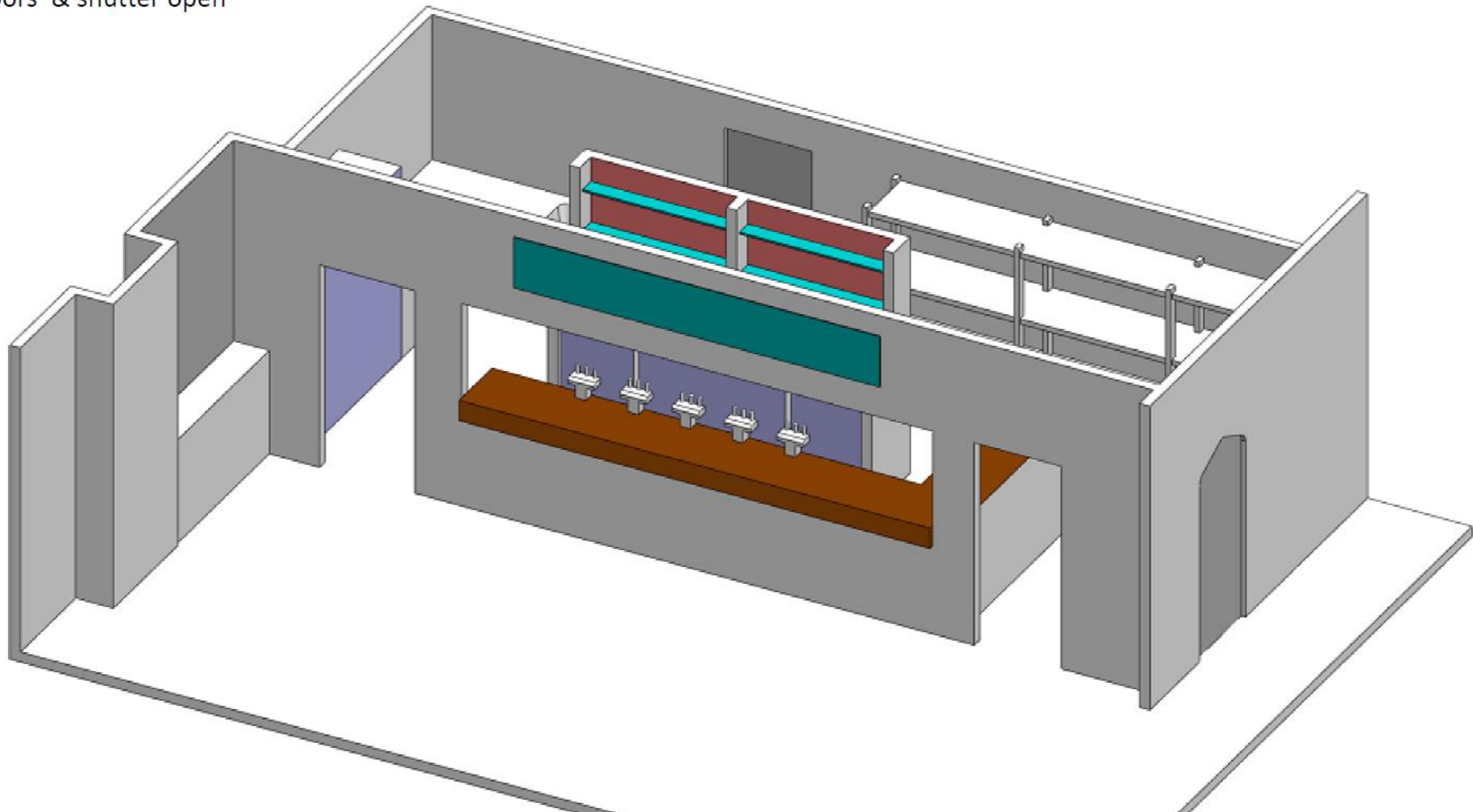


Doors / shutters closed

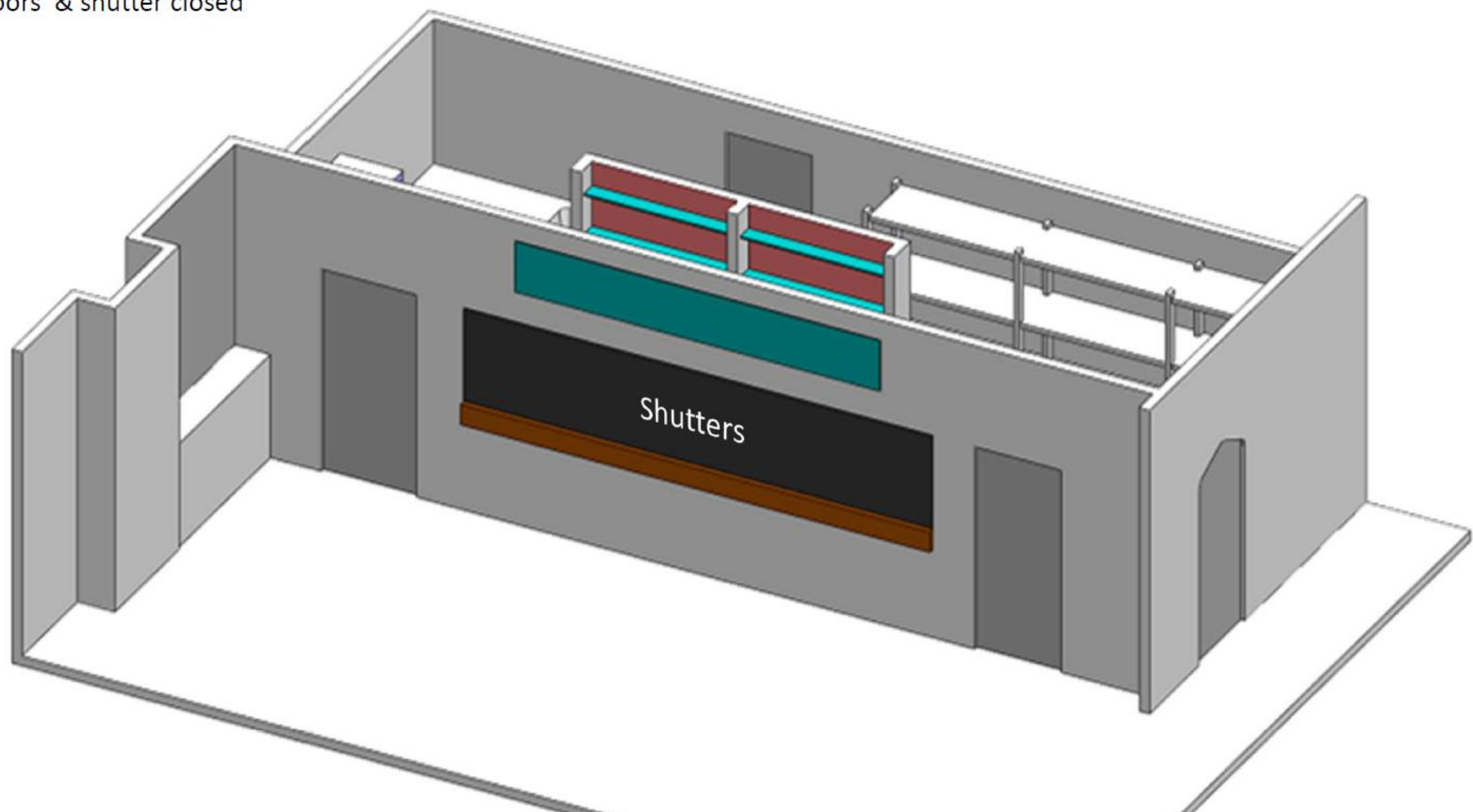


Doors / shutters open

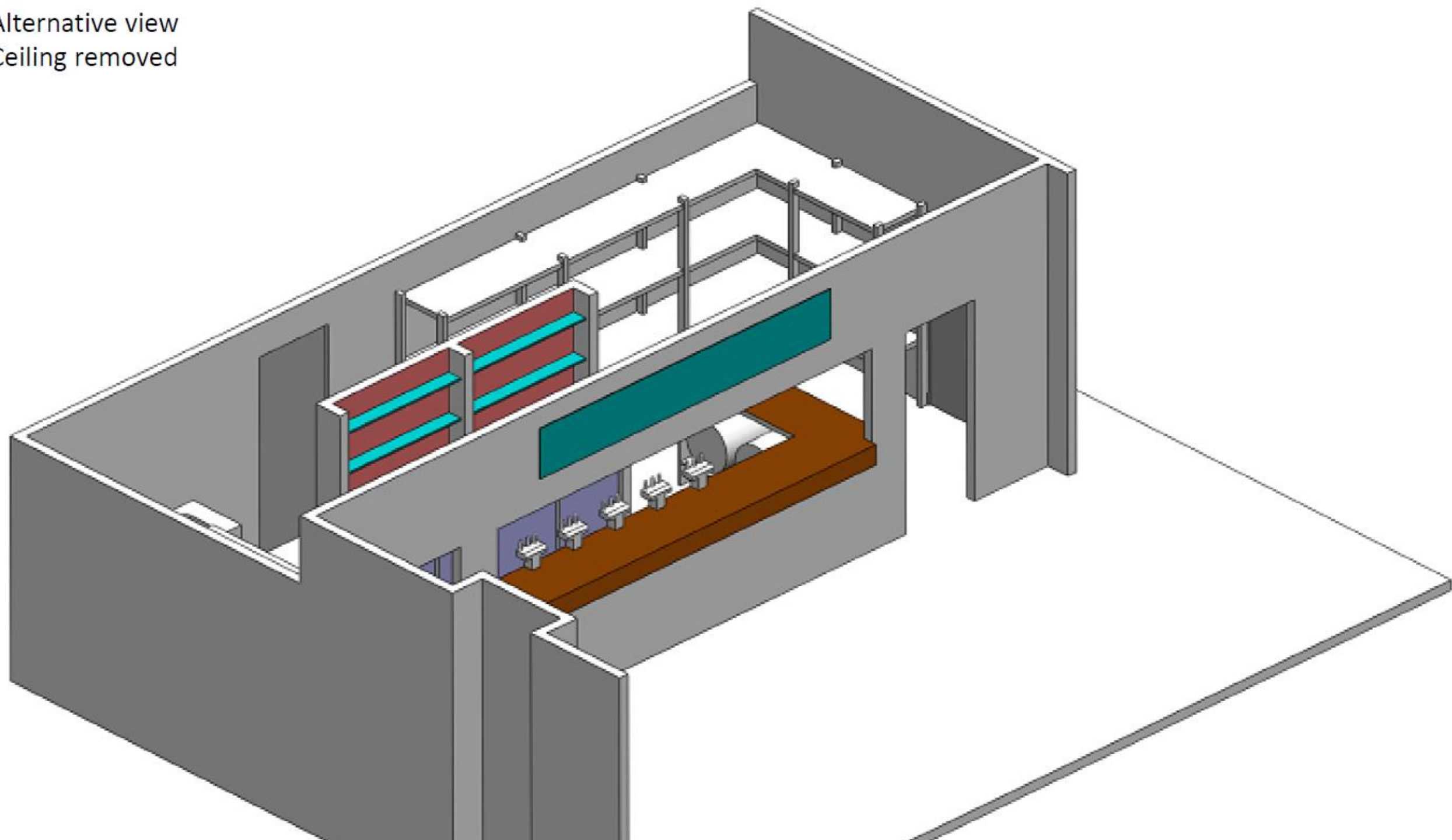
Ceiling removed
Doors & shutter open



Ceiling removed
Doors & shutter closed



Alternative view
Ceiling removed





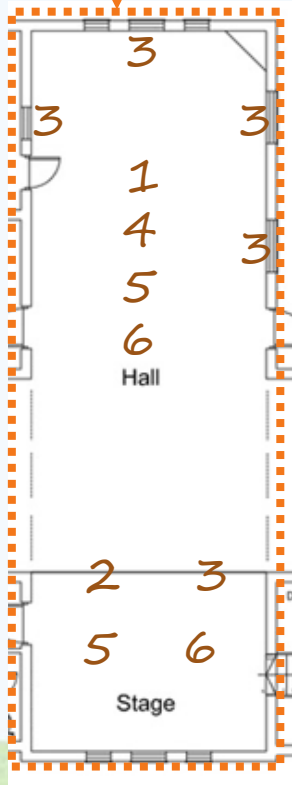
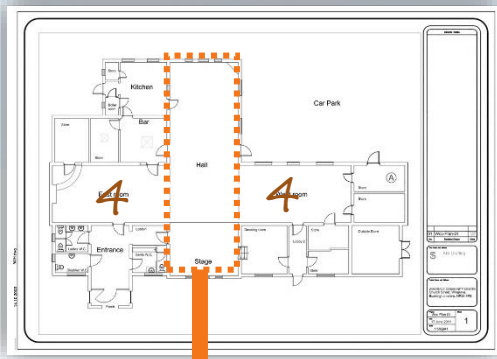
Wingrave
Community
Association



Vision:2020

Main Hall & Stage

Main Hall Redevelopment – Proposed Plans



1. Suspended Ceiling replacement and removal of old ducting, new insulation and timber treatments
2. New Timber Proscenium to account for new height
3. New stage and Main Hall window curtains to account for new height of ceiling
4. Main hall lighting and electricals for East and West Rooms as current is end of life (advisory from electrician).
 - Proposal includes computer controlled arrangement with independent controls by room – easy to use setup for users
5. New general use Main Hall and Stage lighting
6. New Theatre light rigs – above stage and in Main Hall

Vision:2020 Main Hall

Visualisation – Main Hall Redevelopment



Current Wingrave suspended ceiling



Example - Eridge Village Hall



Vision:2020 Main Hall

Visualisation – Main Hall Proscenium



Current Wingrave Stage and Proscenium



Example - Barrington Park Village Hall



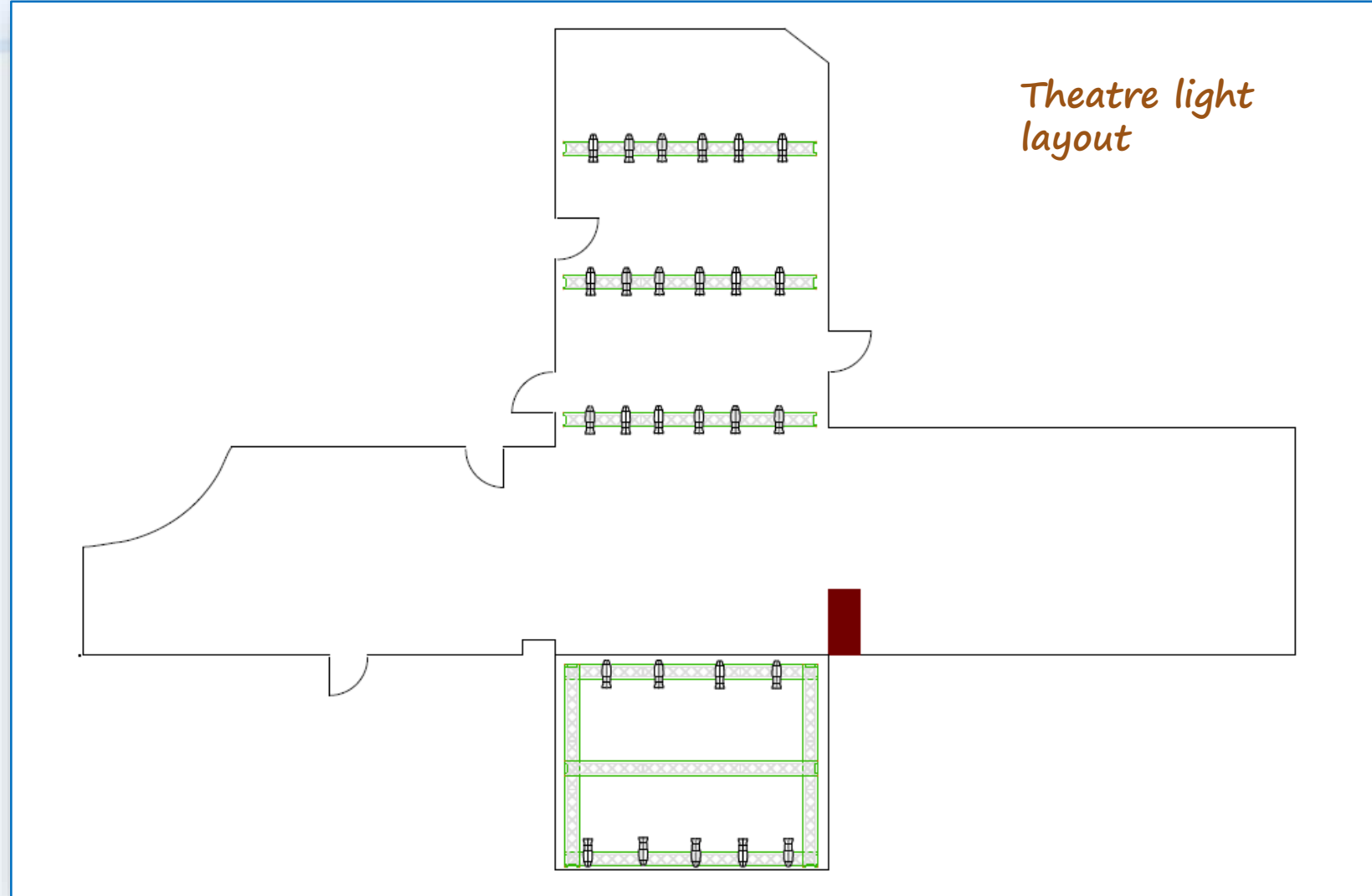
Proposed lighting layout

Main hall lighting and electricals for East and West Rooms – requires replacement.

Propose a mix of day to day lighting, architectural lighting and theatre lighting.

Computer controlled with room by room easy to use panels

1. New general use Main Hall and Stage lighting (Architectural)
2. New removable theatre lighting and associated rig for special events (e.g. shows, weddings, balls).



Architectural Lighting Examples



Main Hall Indicative Materials and palette



Curtains

Villa Nova



Blinds

Carnival Blackout

Main Hall Palette guidance from Peter John designs

Main Hall Flooring

Install a consistent and elegant flooring solution for the coming decades.

- Current parquet flooring blocks are lifting in various places – being the subject of ongoing interim fixes.
- Plan to install new parquet flooring in the main hall



Example: Llangathen Village Hall

If you want to know more...

- If you want to Help?
- If you want to Sponsor?
- If you want to Comment?

Then contact:

treasurer@wingrave-wca.co.uk



Wingrave
Community
Association